

A photograph of two surgeons in an operating room. The surgeon on the right is a man wearing glasses, a surgical cap, a white face mask, and blue scrubs. He is holding a laparoscopic grasper with his right hand and a laparoscopic telescope with his left hand. The surgeon on the left is a woman wearing a surgical cap and a white face mask, also in blue scrubs. She is holding the laparoscopic telescope with her right hand. Both surgeons are looking at the patient, who is lying on the operating table. The patient's abdomen is visible, showing a small incision site. The background shows the operating room environment, including a large circular light fixture and a window with vertical bars.

**MINIMALLY-INVASIVE
LAPAROSCOPIC TELESCOPE**

LAPAROSCOPY

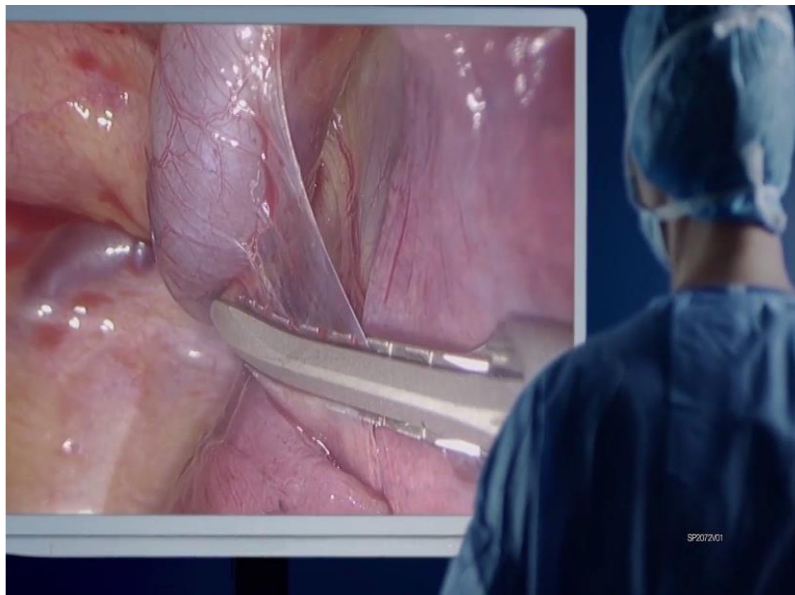
Laparoscopy is known as minimally invasive surgery (MIS). With a complete range of units and instruments for Laparoscopy, Diasurge has become one of the most important suppliers for the biggest sector of endoscopy. Individual adjustments to special necessities of the operators or the current use are possible as well as new constructions based on customer's specifications. Our scopes meet all technical requirements of a first class product.



- The new generation of compact objectives used in our scopes provides the guarantee of full autoclavability and gives the user security of a long life product.
- Comfortable direction of view on all scopes according to the necessity of the operation.
- True color reflection and regular focus on the whole image.
- Optimal depth of field, also according to the necessity of the operation.

FIBER OPTICS OPTIMIZES ILLUMINATION

High-tech fiber optics is used in the telescopes in order to illuminate the camera's visual field during the endoscopy to the best possible effect. The innovative fiber optics chemical stability makes them highly resistant to aging.



HIGH RESOLUTION UP TO EDGE

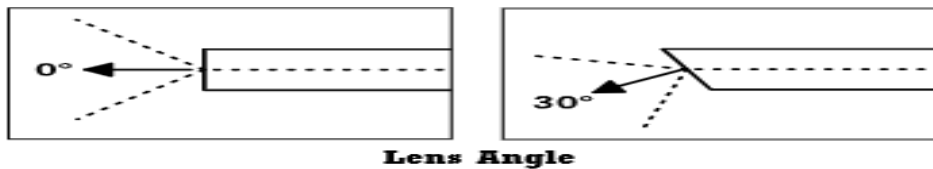
Diasurge telescopes have been optimized for high resolution images. They are highly luminous and optimized sharpness profile cross the entire endoscopy image. The high quality lenses minimize image defects and thereby guarantee a clear monitor rendition.

MINI LAPAROSCOPES

Mini-Laparoscope - Autoclavable

Outer Diameter Range: \varnothing 2 - 4 mm
Working Length Range: L 200 - 300 mm
Direction of view: 0°, 30°

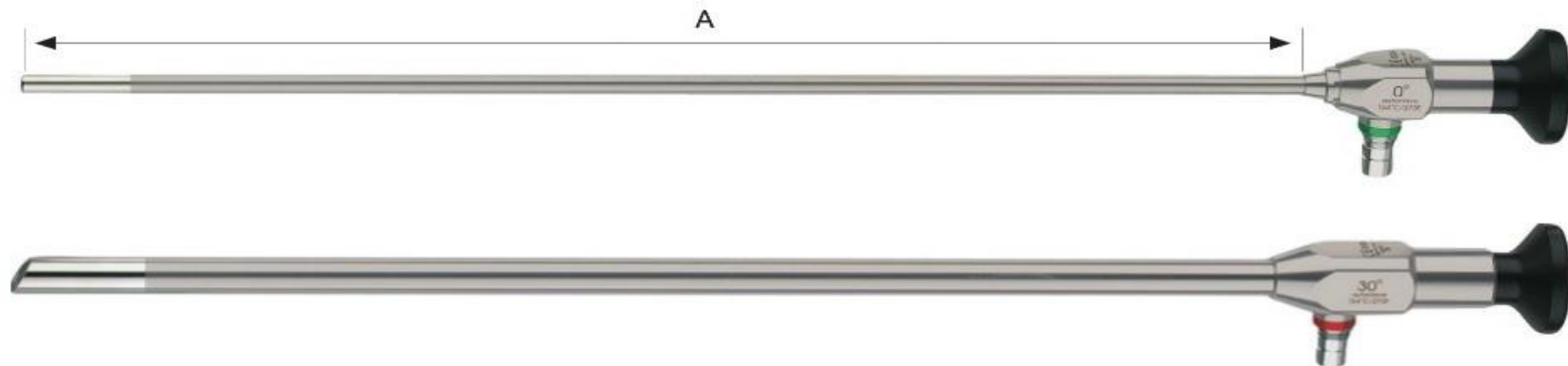
PRODUCT CODE	DIAMETER	LENGTH	LENS ANGLE
DS-30-0079-00	2 mm	300 mm	0°
DS-30-0417-00			30°



- * Mini laparoscopy scopes multiple lens angles
- * Sterilization method: Autoclavable



LAPAROSCOPES – MULTIPLE SCOPE RANGE



Laparoscope - Autoclavable

Outer Diameter Range:

Ø 5 - 10 mm

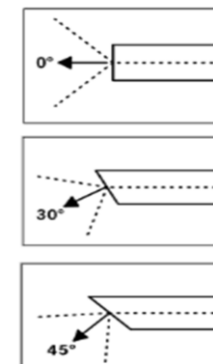
Working Length Range:

L 300 - 341 mm

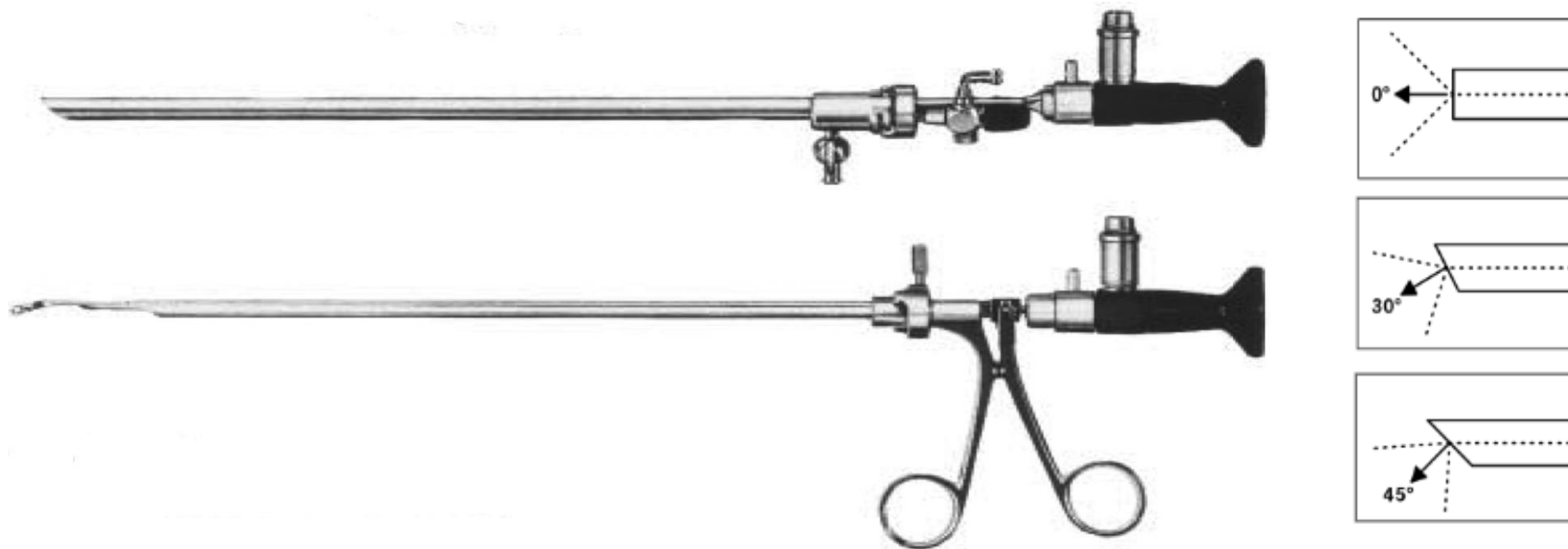
Direction of view:

0°, 30°, 45°

PRODUCT CODE	DIAMETER	LENGTH	LENS ANGLE
DS-30-0494-00	5 mm	300 mm	0°
DS-30-0495-00			30°
DS-30-0427-00	10 mm	339 mm	0°
DS-30-0428-00		341 mm	30°
DS-30-0507-00			45°



THORACOSCOPY – SCOPES



Thoracoscope - Autoclavable

Outer Diameter Range:

Ø 10 mm

Working Length Range:

L 170 mm

Direction of view:

0°, 30°, 45°

PRODUCT CODE	DIAMETER	LENGTH	LENS ANGLE
DS-30-0504-00	10 mm	170 mm	0°
DS-30-0516-00			30°
DS-30-0329-00			45°

* Thoracoscopy multiple lens angles, Sterilization method: Autoclavable



KEY BENEFITS

- Improves visibility and allows more precise and safe surgery
- Realizes rich color reproduction and provides suitable colors for each clinical discipline.
- Enables easier determination of tissue boundaries
- Better visualization of blood vessels and lesions due to high range of red color reproduction
- Allows surgeons to observe fine patterns and structures of tissues in the body in extreme detail even when enlarged.